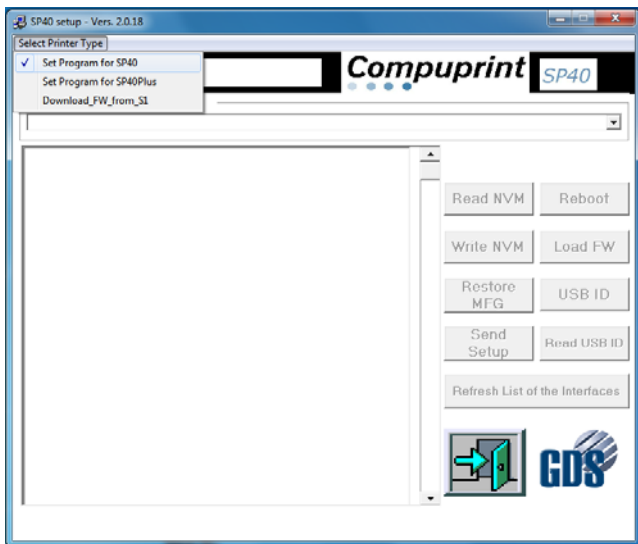


README

The Remote Setup Tool ver. 2.0.18 can be used with firmware versions from Rel. 1.60 or above.
It can allow the CDC driver also at READY status.

This tool is compatible also with the SP40 but it has a major change.
It is mandatory to select the printer type from the pop-up menu before use it.



Also the procedure to download the firmware into the printer.
Before to start with the dll procedure (hold the S1 key and power-on the printer with cover open), select from the pop-up menu the : Download_FW_from_S1

